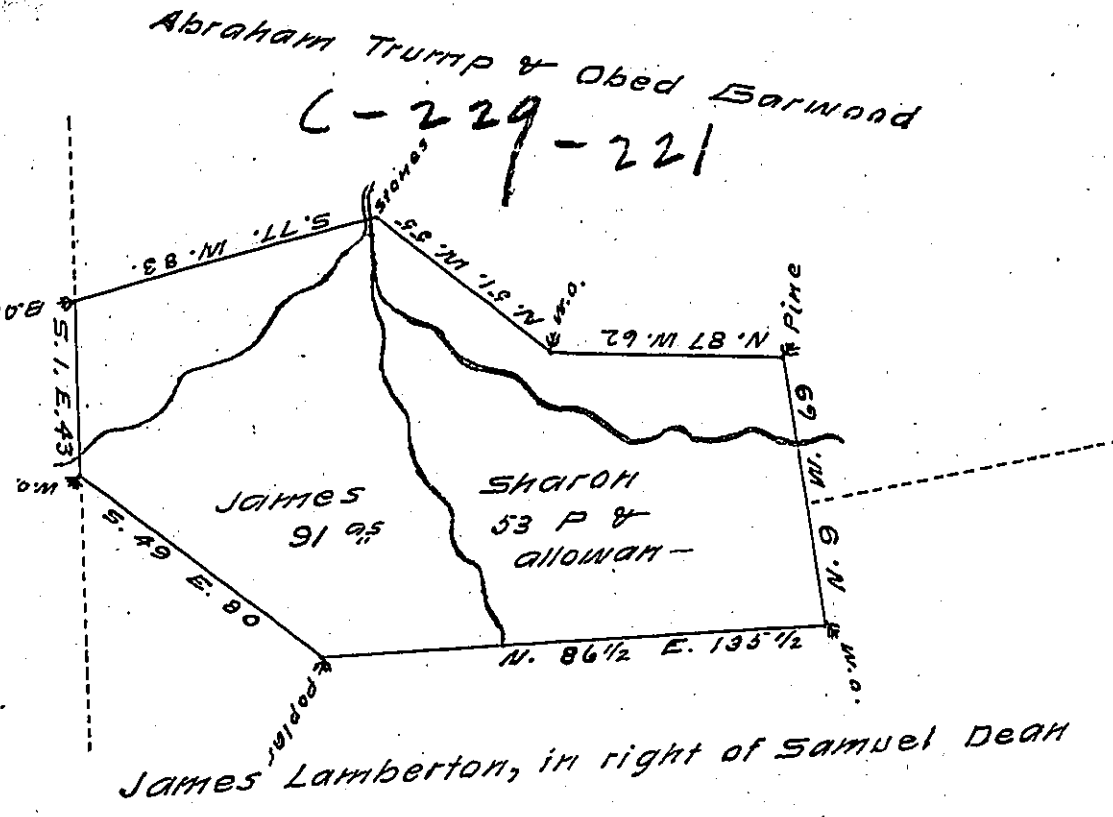


Andrew Lawske in right of James Sharron



Draught of a tract of land situate in Pyle township Perry County containing ninety one acres fifty three perches and allowance of six per cent for roads &c. Originally surveyed June the 8<sup>th</sup> 1773 on a warrant granted James Sharon, for 100<sup>ac</sup> dated May 22<sup>nd</sup> 1773. Resurveyed March the 8<sup>th</sup> 1832 as the property of James Lamberton.

PL W<sup>th</sup> Wilson, D.S.

Jacob Spangler, Esq<sup>r</sup> }  
 Surveyor General of Pa. }

IN TESTIMONY that the above is a copy of the original remaining on file in the Department of Internal Affairs of Pennsylvania, made conformably to an Act of Assembly approved the 16th day of February, 1833, I have hereunto set my Hand and caused the Seal of said Department to be affixed at Harrisburg, this twentieth day of August 1908

*Henry Howard*  
 Secretary of Internal Affairs.